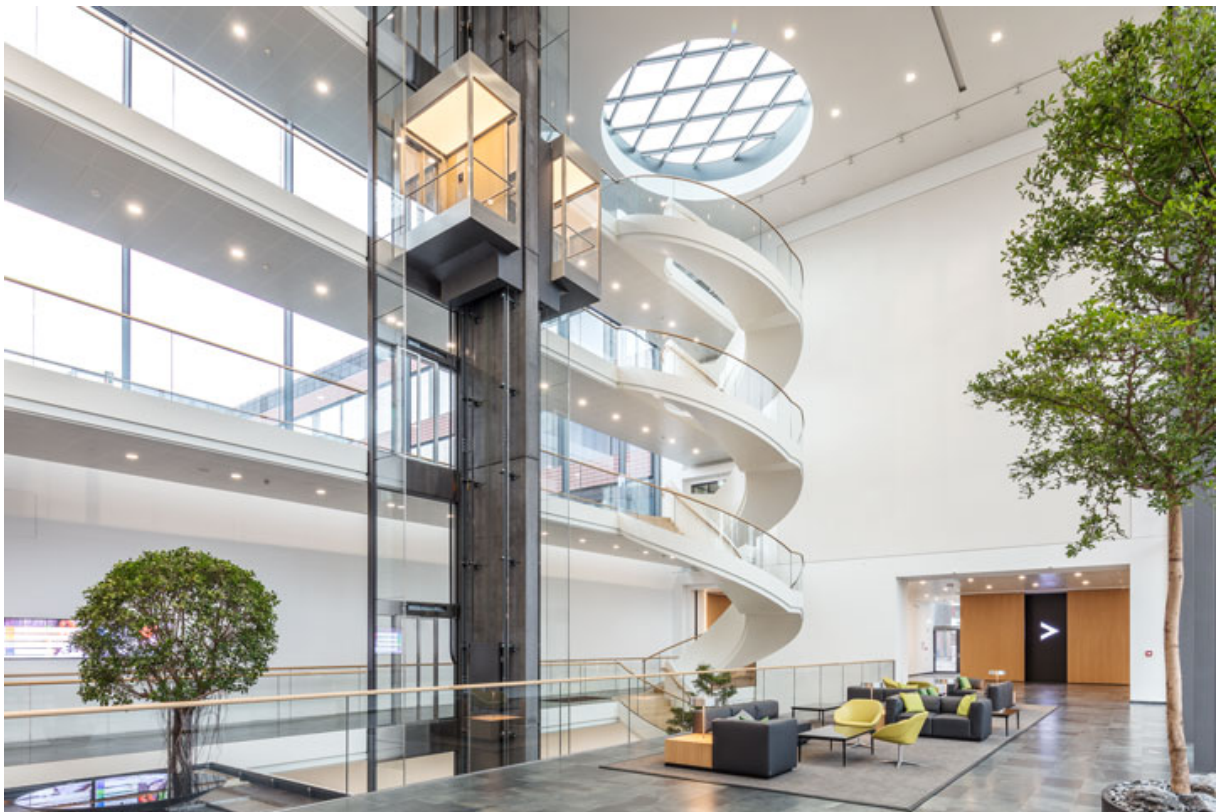


# Product data sheet

## Powerturn / Powerturn F roller guide rail

For transom installation on the hinge side or opposite hinge side with roller guide rail



### **Product features**

---

Opening angle depends on reveal depth

---

Possible with integrated opening restrictor

---

Special profile to prevent rollers jumping out

---

### **Application Areas**

---

Transom installation on the hinge side or opposite hinge side

---

Reveal depths 0 - 200 mm

---

Fire protection doors permitted until reveal depth of 100 mm

---

### **Product Data Table**

---

Productname	Powerturn / Powerturn F roller guide rail
-------------	---

---