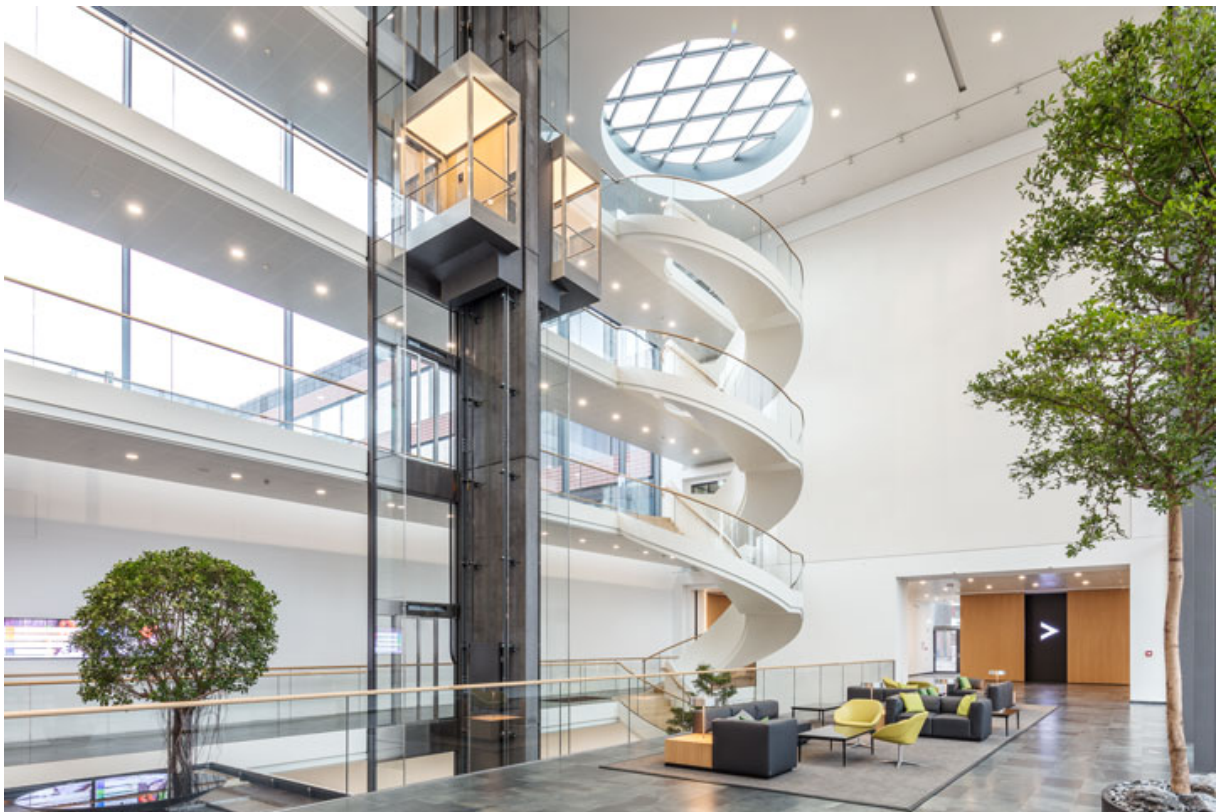


Product data sheet

Closer body TS 5000

Main body for overhead door closer with guide rail EN 2-6 with back check



Product features

Front adjustable closing force with variable adjustment
Closing force display ensures correct setting
Closing speed can be adjusted from the front via valve
Latching action can be adjusted from the front via valve
Back check can be adjusted from the front via valve
Door closer, can be used for right and left hand doors
Minimal installation effort due to low number of individual parts and quick setting

Application Areas

Right and left single-action doors
Single-action doors up to 1400 mm leaf width
Door leaf installation hinge side and transom installation opposite hinge side

Product Data Table

Closing force in accordance with EN 1154	Yes, stepless 2 3 4 5 6
Leaf width (max.)	1400 mm
Same version for DIN left and DIN right	true
Approvals	Door closer tested in accordance with EN 1154
Suitability for fire protection doors	Yes
Length	287 mm
Width	47 mm
Height	60 mm
Adjustable closing force	Yes, stepless
Adjustable closing speed	Yes
Adjustable latching action	Yes, via valve
Integrated back check	Yes, hydraulically adjustable
Visual closing force display	Yes
Safety valve against wilful damage	Yes
Thermo-control valves	Yes