

# Product data sheet

## Perlan AUT 2 wood



Automation for Perlan on doors with a leaf weight of up to  
120 kg

### AREAS OF APPLICATION

- Simple and cost-effective automation solution for the Perlan sliding door fitting system
- Perlan sliding door fitting
- Shading systems and walk-in wardrobes
- Single and multi-leaf sliding panel
- Connection to building management systems possible
- Mounting to the wall and also to the ceiling via additional ceiling brackets
- Not for escape or rescue routes

### PRODUCT FEATURES

- Automation of Perlan sliding doors with a leaf weight of max. 120 kg
- Simple driver mounting above on the door leaf
- For leaves made of wood, plastic, or metal
- Simple installation of the belt drive beneath the Perlan track
- Fast drive installation with only 2 screws at the end of the track

### TECHNICAL DATA

|             |                   |
|-------------|-------------------|
| Productname | Perlan AUT 2 wood |
|-------------|-------------------|

### PART

#### TRACK PERLAN 140

Track for sliding door fitting



| Designation      | Description   | Ident-No. | Colour                |
|------------------|---|-----------|-----------------------|
| Track Perlan 140 | with countersunk drill holes (prepared for Perlan SoftStop) | 142518    | EV1                   |
| Track Perlan 140 | with countersunk drill holes (prepared for Perlan SoftStop) | 128660    | EV1                   |
| Track Perlan 140 | with countersunk drill holes (prepared for Perlan SoftStop) | 128662    | Stainless steel optic |
| Track Perlan 140 | with countersunk drill holes (prepared for Perlan SoftStop) | 135061    | Stainless steel optic |
| Track Perlan 140 | with countersunk drill holes (prepared for Perlan SoftStop) | 135048    | EV1                   |
| Track Perlan 140 | with countersunk drill holes (prepared for Perlan SoftStop) | 135050    | Stainless steel optic |
| Track Perlan 140 | with countersunk drill holes (prepared for Perlan SoftStop) | 135049    | Stainless steel optic |

| Designation      | Description   | Ident-No. | Colour |
|------------------|---|-----------|--------|
| Track Perlan 140 | with countersunk drill holes (prepared for Perlan SoftStop) | 135047    | EV1    |
| Track Perlan 140 | with countersunk drill holes (prepared for Perlan SoftStop) | 142519    | EV1    |
| Track Perlan 140 | with countersunk drill holes (prepared for Perlan SoftStop) | 135046    | EV1    |

**ACCESSORIES****PERLAN AUT ADDITIONAL SWITCH (WITHOUT CONTROL UNIT)**

Additional switch for controlling automatic sliding door fittings



| Designation   | Ident-No. |
|---|-----------|
| Perlan AUT additional switch (without control unit) | 126181    |

**TOOTHED BELT PERLAN AUT-NT / AUT**

Toothed drive belts for automatic sliding door fittings



| Designation                      | Ident-No. |
|----------------------------------|-----------|
| Toothed belt Perlan AUT-NT / AUT | 141500    |

**CONCEALED SUSPENSION PROFILE SET**

For milling into the wooden leaf



| Designation                      | Description  | Ident-No. |
|----------------------------------|--|-----------|
| Concealed suspension profile set | 2 pieces, for milling into the timber leaf, including suspension bolts and flat open-ended spanner for vertical adjustment | 138015    |

### SPACER PROFILE 10 MM FOR CONCEALED WALL BRACKET PERLAN 43 MM

Spacer profile for wall installation for leaf thicknesses up to 43 mm



| Designation  | Description   | Ident-No. | Colour                |
|--|---|-----------|-----------------------|
| Spacer profile 10 mm for concealed wall bracket Perlan 43 mm | for use with "concealed wall bracket up to 43 mm", stackable up to 20 mm spaces | 136679    | EV1                   |
| Spacer profile 10 mm for concealed wall bracket Perlan 43 mm | for use with "concealed wall bracket up to 43 mm", stackable up to 20 mm spaces | 136711    | EV1                   |
| Spacer profile 10 mm for concealed wall bracket Perlan 43 mm | for use with "concealed wall bracket up to 43 mm", stackable up to 20 mm spaces | 136712    | EV1                   |
| Spacer profile 10 mm for concealed wall bracket Perlan 43 mm | bespoke configuration   | 136717    |                       |
| Spacer profile 10 mm for concealed wall bracket Perlan 43 mm | for use with "concealed wall bracket up to 43 mm", stackable up to 20 mm spaces | 136680    | EV1                   |
| Spacer profile 10 mm for concealed wall bracket Perlan 43 mm | for use with "concealed wall bracket up to 43 mm", stackable up to 20 mm spaces | 136716    | Stainless steel optic |
| Spacer profile 10 mm for concealed wall bracket Perlan 43 mm | for use with "concealed wall bracket up to 43 mm", stackable up to 20 mm spaces | 136714    | Stainless steel optic |
| Spacer profile 10 mm for concealed wall bracket Perlan 43 mm | for use with "concealed wall bracket up to 43 mm", stackable up to 20 mm spaces | 136715    | Stainless steel optic |
| Spacer profile 10 mm for concealed wall bracket Perlan 43 mm | for use with "concealed wall bracket up to 43 mm", stackable up to 20 mm spaces | 136713    | Stainless steel optic |

### DOOR STOP

End stop for sliding leaves



| Designation | Ident-No. |
|-------------|-----------|
| Door stop   | 000339    |
| Door stop   | 000342    |

### **BUFFER FOR CONTINUOUS FLOOR GUIDE \***

Buffer for continuous floor guides integrated in the floor



| <b>Designation</b>                | <b>Ident-No.</b> |
|-----------------------------------|------------------|
| Buffer for continuous floor guide | 124655           |

### **HEIGHT COMPENSATION MECHANISM / CEILING DISTANCE SET, WITH VARIABLE ADJUSTMENT**

Height compensation with variable adjustment for ceiling installation of tracks



| <b>Designation</b>   | <b>Description</b>   | <b>Ident-No.</b> |
|--|--|------------------|
| Height compensation mechanism / ceiling distance set, with variable adjustment | 6 pieces, height compensation mechanism with variable adjustment from 13 mm to 18 mm. For use for ceiling mounting using clip-on cover 100/145 as well as for general use on uneven ceilings | 138099           |

### **PERLAN AUT 2 CONTROL \***

Control unit for automatic sliding door fitting



| <b>Designation</b>   | <b>Ident-No.</b> |
|----------------------|------------------|
| Perlan AUT 2 control | 147757           |

### DOOR PULL HANDLE, CONFIGURED \*

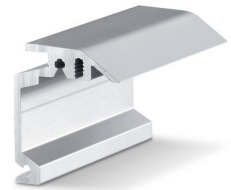
Push bar – round design for installation on glass leaves



| Designation                    | Ident-No. | Colour          |
|--------------------------------|-----------|-----------------|
| Door pull handle, configured * | 127616    | Stainless steel |

### WALL BRACKET CONCEALED PERLAN

Wall bracket for concealed wall installation of tracks



| Designation                   | Description                             | Ident-No. | Colour                | Type of installation |
|-------------------------------|---|-----------|-----------------------|----------------------|
| Wall bracket concealed Perlan | For use up with to 43 mm leaf thickness | 130445    | Stainless steel optic | Wall                 |
| Wall bracket concealed Perlan | For use up with to 43 mm leaf thickness | 130444    | Stainless steel optic | Wall                 |
| Wall bracket concealed Perlan | For use up with to 43 mm leaf thickness | 130447    | Stainless steel optic | Wall                 |
| Wall bracket concealed Perlan | For use up with to 43 mm leaf thickness | 130439    | EV1                   | Wall                 |
| Wall bracket concealed Perlan | For use up with to 43 mm leaf thickness | 130440    | EV1                   | Wall                 |
| Wall bracket concealed Perlan | For use up with to 43 mm leaf thickness | 130446    | Stainless steel optic | Wall                 |
| Wall bracket concealed Perlan | For use up with to 43 mm leaf thickness | 130435    | EV1                   | Wall                 |
| Wall bracket concealed Perlan | For use up with to 43 mm leaf thickness | 130436    | EV1                   | Wall                 |
| Wall bracket concealed Perlan | For use up with to 43 mm leaf thickness | 130438    | EV1                   | Wall                 |

### TOOTHED BELT PERLAN AUT-NT / AUT 2, BESPOKE

Toothed drive belts for automatic sliding door fittings



| Designation                                 | Ident-No. |
|---|-----------|
| Toothed belt Perlan AUT-NT / AUT 2, bespoke | 141561    |



## COMPLETE CLIP-ON COVER SET 100

Clip-on cover for covering Perlan door fitting systems



| Designation                    | Description  | Ident-No. | Type of installation |
|--------------------------------|--|-----------|----------------------|
| Complete clip-on cover set 100 | for wall and ceiling mounting, continuous cover, bespoke configuration | 138098    | Wall, Ceiling        |

\* The products designated above may vary in form, type, characteristics, function, or availability depending on the country. Please get in touch with your GEZE contact person if you have any questions.