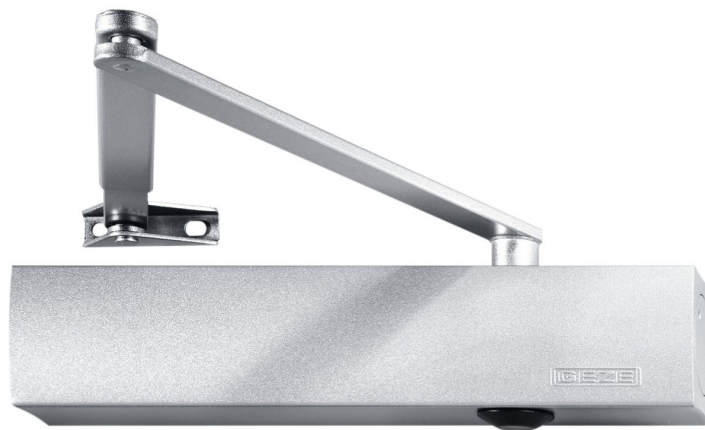


Product data sheet

TS 4000 S

Overhead door closer with link arm for single leaf doors of up to 1400 mm leaf width with delayed closing



Product features

- Closing force with variable adjustment from EN1-6
- Can be used for right and left hand doors without conversion
- Adjustable closing delay to adapt the closing force of the door up to approx 80° opening angle
- Hydraulic latching action which accelerates the door shortly before the closed position
- Closing speed can be individually adjusted
- Integrated back check, slows down doors that are thrown open forcefully
- Visual closing force display for easy control of the setting
- All functions can be adjusted from the front

Application Areas

- Right and left single-action doors
- Single-action doors up to 1400 mm leaf width
- Door leaf installation hinge side and transom installation opposite hinge side
- Door leaf installation on the opposite hinge side possible in parallel arm installation

Product Data Table

Product features	GEZE TS 4000 S
Suitability for fire protection doors	Yes

Accessory

Product name

- F-ARM N. AUSSCHALT
- Gestänge TS 2/4000 mit ein-/ausschaltbarer mech. Festst.
- ABDECKK TS 5500/4500

Part

Product name

- Gestänge TS 2/4000 Standard
- GEST. TS 4000 VERL.
- TS 4000 S O.GESTÄNGE