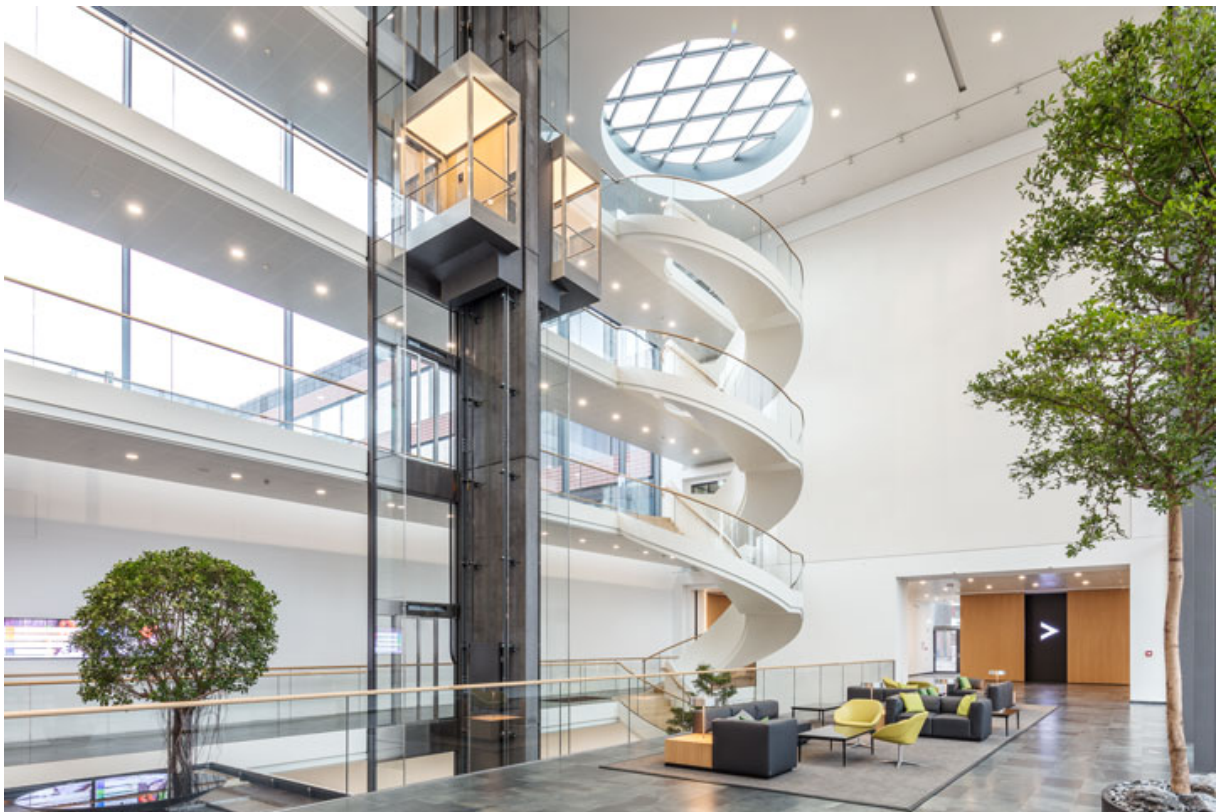


# Product data sheet

## TSA 160 NT IS

Electro-hydraulic swing door system for double leaf doors with closing sequence control



### Product features

---

Closing force with variable adjustment from EN3-6
Opening and closing speed can be individually adjusted
Hydraulic latching action which accelerates the door shortly before the closed position
Mechanical and electrical closing sequence control holds the active leaf in the waiting position until the passive leaf is closed
Vestibule function controls the opening and closing of two consecutive doors (interlocking door system)
Integrated back check, slows down doors that are thrown open forcefully
Automatic reversing detects an obstacle and returns to the opening position
Push & Go function triggers the automatic drive components following light manual pressure on the door leaf
Drive can be used with roller guide rail or link arm

---

### Application Areas

---

Double leaf right and left single-action doors
Single-action doors up to 2800 mm hinge clearance, 1400 mm leaf width and 250 kg weight
Minimum hinge clearance 1470 mm, minimum passive leaf width 400 mm
Interior and exterior doors with high access frequency
Symmetrical and asymmetrical door division possible
Fire and smoke protection doors as TSA 160 NT F as opposite hinge side with link arm
Transom installation hinge and opposite hinge side

---

### Product Data Table

---

Productname	TSA 160 NT IS
Height	100 mm
Overall depth	690 mm
Depth	121 mm
Leaf weight (max.)	250 kg
Hinge clearance (min.-max.) 2-leaf	1470 cm 2800 cm

---