

# Product data sheet

# **TS 5000 R/O ECline \***



Overhead door closer with guide rail for barrier-free, easy-to-open single leaf doors up to 1250 mm leaf width with hold-open magnet and smoke switch control unit

## **AREAS OF APPLICATION**

- Fire and smoke protection doors
- Right and left single-action doors
- Single-action doors up to 1250 mm leaf width
- Door leaf installation hinge side
- Hold-open systems with integrated smoke switch

## PRODUCT FEATURES

- Closing force of EN3-5 with variable adjustment
- Operating voltage 230 V AC
- Can be used for right and left hand doors without conversion
- Door is held open by a hold-open magnet or door closer with free swing function
- Integrated smoke switch control unit, whose signal closes the door automatically in the event of a fire
- Smoke switch with contamination indicator and adaption of the alarm threshold
- Additional smoke detectors can be fitted
- Hydraulic latching action which accelerates the door shortly before it is closed
- Closing speed can be individually adjusted
- Integrated back check, slows down doors that are thrown open forcefully
- Visual closing force display for easy control of the setting
- All functions can be adjusted from the front

## TECHNICAL DATA

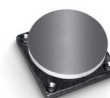
Productname	TS 5000 R/O ECline *
Closing force in accordance with EN 1154	EN 2 - 6
Barrier-free in accordance with DIN 18040 up to leaf width (max.) in mm	1250 mm
Leaf width (max.)	1250 mm
Type of installation	Door leaf installation hinge side
Opening angle (max.)	180 °
Input voltage	230 V AC
Suitability for fire protection doors	Yes
Closing force adjustable	Yes, stepless
Adjustable closing speed	Yes
Latching action adjustable	Yes, via valve
Back check integrated	Yes, hydraulically adjustable
Position of closing force adjustment	Front
Visual closing force display	Yes
Hold-open function	Optional
Smoke switch integrated	Yes

---

## PART

### MAGNETIC COUNTERPLATE BASIC MODEL \*

Standard version, rubber support



#### Designation

GEZE magnetic counter plate \*

---

### MAGNETIC COUNTERPLATE SPRING BUFFER \*

Version with spring buffer



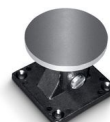
#### Designation

GEZE magnetic counter plate \*

---

### MAGNETIC COUNTERPLATE JOINT \*

Version with adjustable joint



#### Designation

GEZE magnetic counter plate \*

---

### HOLD-OPEN MAGNET BASIC MODEL \*

With screw attachment on the rear and without mounting plate



---

## Designation

GEZE door hold-open magnet \*

---

### HOLD-OPEN MAGNET FLEXIBLE 185 MM \*

For wall or ceiling installation with stand pipe 185 mm



---

## Designation

GEZE door hold-open magnet \*

---

### HOLD-OPEN MAGNET FLEXIBLE 335 MM \*

For wall or ceiling installation with stand pipe 335 mm



---

## Designation

GEZE door hold-open magnet \*

---

### HOLD-OPEN MAGNET WALL INSTALLATION

For wall installation with base plate



---

## Designation

GEZE door hold-open magnet

---

## HOLD-OPEN MAGNET WALL INSTALLATION 65 MM \*

For wall installation with base 65 mm



### Designation

GEZE door hold-open magnet \*

## HOLD-OPEN MAGNET WALL INSTALLATION SURFACE-MOUNTED \*

For wall installation surface mounting or floor mounting with accessories and base



### Designation

GEZE door hold-open magnet \*

## HOLD-OPEN MAGNET WALL INSTALLATION FLUSH-MOUNTED \*

For wall installation flush-mounted



### Designation

GEZE door hold-open magnet \*

## R GUIDE RAIL TS 5000 \*

with integrated smoke switch control unit and lever, without electric hold-open device



# TS 5000 R/O ECLine \*



## Designation

R guide rail TS 5000 \*

R guide rail TS 5000 \*

R guide rail TS 5000 \*

## CLOSER BODY TS 5000 ECLINE

Main body for overhead door closer with guide rail EN 3-5 with back check



## Designation

TS 5000 ECLINE door closer

TS 5000 ECLINE door closer

TS 5000 ECLINE door closer

TS 5000 ECLINE door closer

## AS 500

Manual trigger switch for the manual release of electrically controlled hold-open devices



## Designation

AS 500 manual trigger switch

AS 500 manual trigger switch, glass

---

## ACCESSORIES

### FLEXIBLE OPENING RESTRICTOR

For E and R guide rails, single and double leaf



#### Designation

Flexible opening restrictor

---

### BASE HOLD-OPEN MAGNET \*

For use with floor installation



#### Designation

Base for floor mounting for GEZE hold-open magnet \*

---

### COVER CAP DOOR CLOSER \*

For TS 5000 (L)/TS 4000, can only be used for door leaf installation



#### Designation

Cover cap door closer \*

Cover cap door closer \*

Cover cap door closer \*

Cover cap door closer \*

Cover cap door closer \*

---

**GC 152 \***

Smoke detector for GEZE hold-open systems



**Designation**

GEZE smoke detector GC 152 \*

**GC 153 \***

Thermal detector for GEZE hold-open systems



**Designation**

GEZE thermal detector GC 153 \*

**GC 171 \***

Wireless module for wireless connection of wireless components to GEZE hold-open systems



**Designation**

GEZE GC 171 wireless module \*

**GC 175 \***

Wireless input module for wireless connection of manual trigger switches to the GC 171 wireless module



**Designation**

GEZE GC 175 wireless input module \*



# TS 5000 R/O ECline \*



## WIRELESS KIT FA GC 170 \*

Set comprising GC 171 wireless module and GC 172 wireless ceiling-mounted smoke detector



Designation	Description	Ident-No.
GEZE FA GC 170 wireless KIT *	Set consisting of: 1 piece GC 171 wireless module for the wireless extension of GEZE hold-open systems and 2 pieces GC 172 wireless ceiling-mounted smoke detectors	195524

## COVER CAP DOOR CLOSER \*

For TS 4000/5000, curved shape

### Designation

Cover cap door closer \*

Cover cap door closer \*

## COVER CAP DOOR CLOSER \*

For TS 4000/5000, rectangular shape

### Designation

Cover cap door closer \*

Cover cap door closer \*

## GC 172

Wireless smoke detector for wireless connection to the GC 171 wireless module



### Designation

GC 172 wireless smoke detector

### GC 173

Wireless thermal detector for wireless connection to the GC 171 wireless module



#### Designation

GC 173 wireless thermal detector

### INSTALLATION MATERIAL

#### MOUNTING PLATE GUIDE RAIL \*

For R and RFS guide rail



#### Designation

Mounting plate guide rail

Mounting plate guide rail

#### MOUNTING PLATE DOOR CLOSER

For TS 5000 and TS 4000 with hole pattern in accordance with DIN EN 1154 Supplement 2



Designation	Description	Ident-No.	Colour
Mounting plate door closer	for TS 5000/TS 4000 with hole pattern according to DIN EN 1154 Supplement 1	068627	white RAL 9016
Mounting plate door closer	for TS 5000/TS 4000 with hole pattern according to DIN EN 1154 Supplement 1	057956	Galvanised
Mounting plate door closer	for TS 5000/TS 4000 with hole pattern according to DIN EN 1154 Supplement 1	029176	according to RAL
Mounting plate door closer	for TS 5000/TS 4000 with hole pattern according to DIN EN 1154 Supplement 1	049185	silver-coloured
Mounting plate door closer	for TS 5000/TS 4000 with hole pattern according to DIN EN 1154 Supplement 1	137725	Stainless steel optic
Mounting plate door closer	for TS 5000/TS 4000 with hole pattern according to DIN EN 1154 Supplement 1	052351	dark bronze



---

## MOUNTING PLATE DOOR CLOSER \*

For TS 5000 and TS 4000 with hole pattern in accordance with DIN EN 1154 Supplement 2



---

\* The products designated above may vary in form, type, characteristics, function, or availability depending on the country. Please get in touch with your GEZE contact person if you have any questions.