

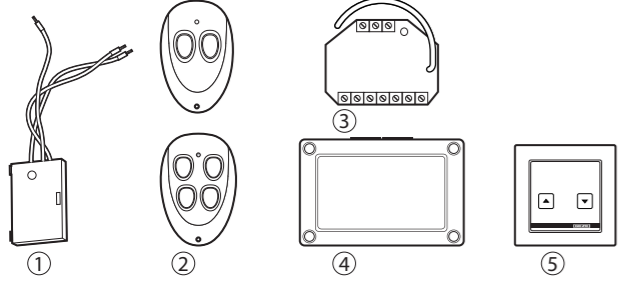
GEZE Window Technology Wireless Program

EN Mounting and service instructions

132673-04



## 1 Window technology wireless program



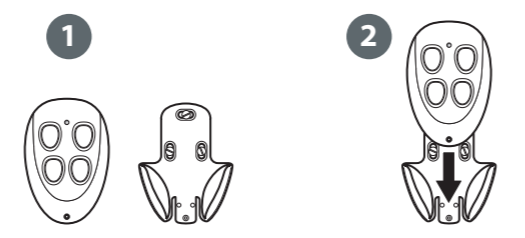
- 1 Wireless transmitter module WTM (Id. No. 131212)
- 2 Wireless transmitter hand-held WTH-2 (Id. No. 131210)
- 3 Wireless transmitter hand-held WTH-4 (Id. No. 131211)
- 4 Wireless receiver module WRM-230 (Id. No. 131215)
- 5 Wireless receiver module WRM-230B (Id. No. 131216)
- 5 Ventilation switch LTA-24-AZ, flush-mounted (Id. No. 129393)

## 2 Function description

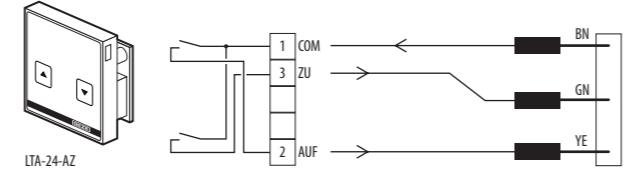
- 2.1 "OPEN" / "CLOSE" command
- ▶ In order to open or close windows press the correspondingly taught button on the transmitter.
- 2.2 "STOP" command
- ▶ In order to stop windows during opening or closing press the corresponding opposite button on the transmitter.

## 3 Mounting / Connection

### 3.1 Connecting the wireless transmitter

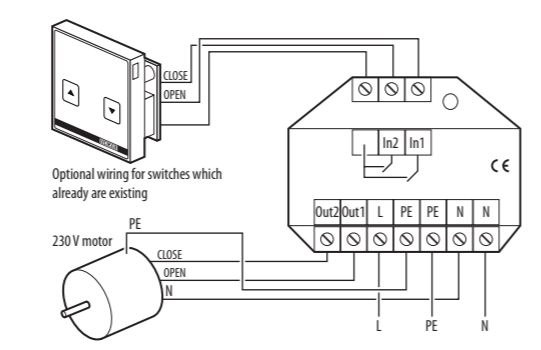


Wireless transmitter hand-held with wall holder

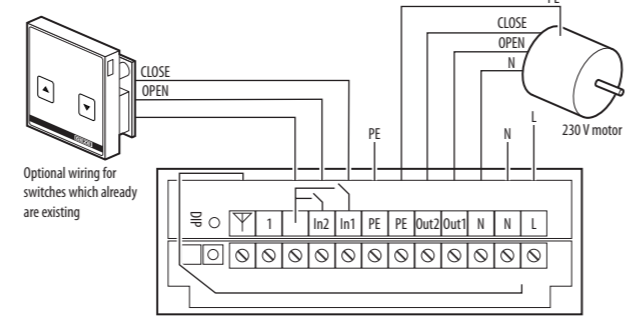


Connecting the wireless transmitter module WTM to the ventilation switch LTA-24-AZ

### 3.2 Connecting the wireless receiver module



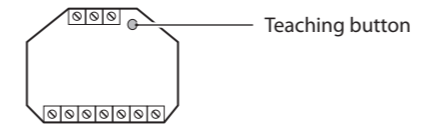
Connecting the wireless receiver module WRM-230 to the 230 V motor



Connecting the wireless receiver module WRM-230B to the 230 V motor

### 3.3 Wireless receiver module operating mode

**!** For safety reasons, the operating mode is set at the wireless receiver module WRM-230 via the teaching button. The operating mode has to be set correctly before initial commissioning.



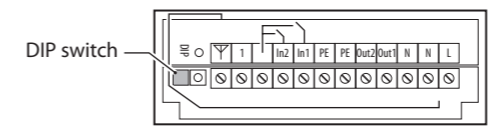
Teaching button at the wireless receiver module WRM-230

- ▶ Press the teaching button at the wireless receiver module for approx. 1 second.
  - The wireless receiver module beeps 1 x briefly every 3 seconds.
- ▶ Press the teaching button again for approx. 1 second.
  - The set operating mode is output acoustically:
    - The wireless receiver module beeps 1 x briefly every 3 seconds: Pulsed operation, when, for example, there is a cabled ventilation switch
    - The wireless receiver module beeps 2 x briefly every 3 seconds: Pulsed and continuous operation, when, for example, there is no cabled ventilation switch.

**!** The continuous signal drops out after 10 minutes.

- ▶ In order to change the operating mode, press the teaching button at the wireless receiver module for approx. 1 second.
- ▶ In order to store the operating mode, press the teaching button at the wireless receiver module for approx. 3 seconds.
  - The wireless receiver module beeps 1 x long as confirmation.
  - The operating mode at the wireless receiver module has been taught successfully.

**!** The operating mode at the wireless receiver module WRM-230B is set by means of the DIP switch that has to be set correctly before initial commissioning.

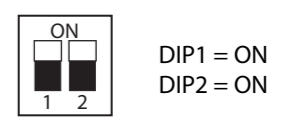


DIP switch at the wireless receiver module WRM-230B

Pulsed operation:  
 ▫ when there is a cabled ventilation switch



Pulsed and continuous operation:  
 ▶ when there is no cabled ventilation switch

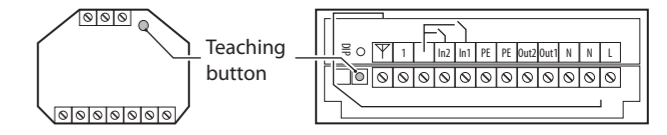


**!** The continuous signal drops out after 10 minutes.

## 4 Commissioning

### 4.1 Teaching wireless transmitters

For safety reasons, the wireless transmitter can only be taught during the first 5 minutes after the operating voltage has been switched on at the drive.



Teaching button at the wireless receiver module WRM-230 and WRM-230B

- ▶ Press the teaching button at the wireless receiver module for approx. 1 second in order to activate teaching.
    - The wireless receiver module beeps 1 x briefly every 3 seconds.
    - The memory for the "OPEN" function is selected.
  - ▶ Press the corresponding button for "OPEN" at the wireless transmitter briefly within 30 seconds.
    - The wireless receiver module beeps 1 x long as confirmation and then 2 x every 3 seconds.
    - The memory for the "CLOSE" function is selected.
  - ▶ Press the corresponding button for "CLOSE" at the wireless transmitter briefly within 30 seconds.
    - The wireless receiver module beeps 1 x long as confirmation.
    - The wireless receiver module has been taught successfully and terminates teaching mode automatically.
- If further wireless transmitters are to be taught, repeat Steps.
- A maximum of 85 wireless transmitters can be taught per wireless receiver module. If more than 85 wireless transmitters are to be taught, additional wireless receiver modules are to be connected.

### 4.2 Deleting wireless transmitters

For safety reasons, the wireless transmitter can only be deleted during the first 5 minutes after the operating voltage has been switched on.

- ▶ Press the teaching button at the wireless receiver module for approx. 10 seconds.
    - The wireless receiver module beeps 1 x long as confirmation.
    - All the taught wireless transmitter have been deleted successfully from the memory.
- Taught wireless transmitters can only be overwritten. If a taught wireless transmitter is to be deleted, all the taught wireless transmitters have to be deleted.

## 5 Maintenance / Battery change

### 5.1 Wireless transmitter hand-held

The battery durable life is designed for approx. 300,000 operations.

When the battery power declines, the LED begins to flash during operation. The battery should then be replaced by a new A232 battery (Id. No. 131217).

### 5.2 Wireless transmitter module

The battery durable life is designed for approx. 50,000 operations.

When the battery power declines, the LED begins to flash during operation. The battery should then be replaced by a new CR 2032 battery (Id. No. 131218).

## 6 Technical data

Frequency:	433.952 MHz
Security:	Rolling code
Range:	approx. 30 m
Power supply:	WTH: 12 V, A232 battery, 45 mA
	WTM: 3 V, CR 2032 battery, 150 mA
	WRM-230: 230 V, 3.9 mA (power consumption during standby)
	WRM-230B: 230 V, 5.6 mA (power consumption during standby)
Relay contact:	WRM-230: 2 outputs 5 A, 230 V
	WRM-230B: 2 outputs 5 A, 230 V
Dimensions (W x H x D):	WTH: 78 x 51 x 23 mm
	WTM: 44 x 30 x 11 mm
	WRM-230: 52 x 47 x 23 mm
	WRM-230B: 130 x 80 x 35 mm
Degree of protection:	WTH: IP 54
	WTM: IP 20
	WRM-230B IP 54
Storage temperature:	-20 to +85 °C
Operating temperature:	0 to +50 °C
Humidity:	max. 95%, non-condensing

## 7 Declaration of conformity

GEZE herewith states that the

- Wireless transmitting module WTM
- Hand-held transmitter WTH-2 / WTH-4
- Receiving module WRM-230 / 230B

corresponds to Directive 2014/53/EU. The complete text of the EU Declaration of Conformity is available at the following internet address: [www.geze.com](http://www.geze.com)

**Germany**  
GEZE Sonderkonstruktionen GmbH  
Planken 1  
97944 Boxberg-Schweigern  
Tel. +49 (0) 7930 9294 0  
Fax +49 (0) 7930 9294 10  
E-Mail: [sk.de@geze.com](mailto:sk.de@geze.com)  
GEZE GmbH  
Niederlassung Süd-West  
Tel. +49 (0) 7152 203 594  
E-Mail: [leonberg.de@geze.com](mailto:leonberg.de@geze.com)  
GEZE GmbH  
Niederlassung Süd-Ost  
Tel. +49 (0) 7152 203 6440  
E-Mail: [muenchen.de@geze.com](mailto:muenchen.de@geze.com)  
GEZE GmbH  
Niederlassung Ost  
Tel. +49 (0) 7152 203 6840  
E-Mail: [berlin.de@geze.com](mailto:berlin.de@geze.com)  
GEZE GmbH  
Niederlassung Mitte/Luxemburg  
Tel. +49 (0) 7152 203 6888  
E-Mail: [frankfurt.de@geze.com](mailto:frankfurt.de@geze.com)  
GEZE GmbH  
Niederlassung West  
Tel. +49 (0) 7152 203 6770  
E-Mail: [essen.de@geze.com](mailto:essen.de@geze.com)  
GEZE GmbH  
Niederlassung Nord  
Tel. +49 (0) 7152 203 6600  
E-Mail: [hamburg.de@geze.com](mailto:hamburg.de@geze.com)  
GEZE Service GmbH  
Tel. +49 (0) 1802 923392  
E-Mail: [service-info.de@geze.com](mailto:service-info.de@geze.com)

**Austria**  
GEZE Austria  
E-Mail: [austria.at@geze.com](mailto:austria.at@geze.com)  
[www.geze.at](http://www.geze.at)

**Baltic States**  
GEZE GmbH Baltic States office  
E-Mail: [office-latvia@geze.com](mailto:office-latvia@geze.com)  
[www.geze.com](http://www.geze.com)

**Benelux**  
GEZE Benelux B.V.  
E-Mail: [benelux.nl@geze.com](mailto:benelux.nl@geze.com)  
[www.geze.be](http://www.geze.be)  
[www.geze.nl](http://www.geze.nl)

**Bulgaria**  
GEZE Bulgaria - Trade  
E-Mail: [office-bulgaria@geze.com](mailto:office-bulgaria@geze.com)  
[www.geze.bg](http://www.geze.bg)

**China**  
GEZE Industries (Tianjin) Co., Ltd.  
E-Mail: [chinasales@geze.com.cn](mailto:chinasales@geze.com.cn)  
[www.geze.com.cn](http://www.geze.com.cn)

GEZE Industries (Tianjin) Co., Ltd.  
Branch Office Shanghai  
E-Mail: [chinasales@geze.com.cn](mailto:chinasales@geze.com.cn)  
[www.geze.com.cn](http://www.geze.com.cn)

GEZE Industries (Tianjin) Co., Ltd.  
Branch Office Guangzhou  
E-Mail: [chinasales@geze.com.cn](mailto:chinasales@geze.com.cn)  
[www.geze.com.cn](http://www.geze.com.cn)

GEZE Industries (Tianjin) Co., Ltd.  
Branch Office Beijing  
E-Mail: [chinasales@geze.com.cn](mailto:chinasales@geze.com.cn)  
[www.geze.com.cn](http://www.geze.com.cn)

**France**  
GEZE France S.A.R.L.  
E-Mail: [france.fr@geze.com](mailto:france.fr@geze.com)  
[www.geze.fr](http://www.geze.fr)

**Hungary**  
GEZE Hungary Kft.  
E-Mail: [office-hungary@geze.com](mailto:office-hungary@geze.com)  
[www.geze.hu](http://www.geze.hu)

**Iberia**  
GEZE Iberia S.R.L.  
E-Mail: [info@geze.es](mailto:info@geze.es)  
[www.geze.es](http://www.geze.es)

**India**  
GEZE India Private Ltd.  
E-Mail: [office-india@geze.com](mailto:office-india@geze.com)  
[www.geze.in](http://www.geze.in)

**Italy**  
GEZE Italia S.r.l.  
E-Mail: [italia.it@geze.com](mailto:italia.it@geze.com)  
[www.geze.it](http://www.geze.it)

GEZE Engineering Roma S.r.l.  
E-Mail: [roma@geze.biz](mailto:roma@geze.biz)  
[www.geze.it](http://www.geze.it)

**Poland**  
GEZE Polska Sp.z o.o.  
E-Mail: [geze.pl@geze.com](mailto:geze.pl@geze.com)  
[www.geze.pl](http://www.geze.pl)

**Romania**  
GEZE Romania S.R.L.  
E-Mail: [office-romania@geze.com](mailto:office-romania@geze.com)  
[www.geze.ro](http://www.geze.ro)

**Russia**  
OOO GEZE RUS  
E-Mail: [office-russia@geze.com](mailto:office-russia@geze.com)  
[www.geze.ru](http://www.geze.ru)

**Scandinavia – Sweden**  
GEZE Scandinavia AB  
E-Mail: [sverige.se@geze.com](mailto:sverige.se@geze.com)  
[www.geze.se](http://www.geze.se)

**Scandinavia – Norway**  
GEZE Scandinavia AB avd. Norge  
E-Mail: [norge.se@geze.com](mailto:norge.se@geze.com)  
[www.geze.no](http://www.geze.no)

**Scandinavia – Denmark**  
GEZE Danmark  
E-Mail: [danmark.se@geze.com](mailto:danmark.se@geze.com)  
[www.geze.dk](http://www.geze.dk)

**Singapore**  
GEZE (Asia Pacific) Pte. Ltd.  
E-Mail: [gezeasia@geze.com.sg](mailto:gezeasia@geze.com.sg)  
[www.geze.com](http://www.geze.com)

**South Africa**  
GEZE Distributors (Pty) Ltd.  
E-Mail: [info@geze.co.za](mailto:info@geze.co.za)  
[www.geze.co.za](http://www.geze.co.za)

**Switzerland**  
GEZE Schweiz AG  
E-Mail: [schweiz.ch@geze.com](mailto:schweiz.ch@geze.com)  
[www.geze.ch](http://www.geze.ch)

**Turkey**  
GEZE Kapsı ve Pencere Sistemleri  
E-Mail: [office-turkey@geze.com](mailto:office-turkey@geze.com)  
[www.geze.com](http://www.geze.com)

**Ukraine**  
GEZE Ukraine TOV  
E-Mail: [office-ukraine@geze.com](mailto:office-ukraine@geze.com)  
[www.geze.ua](http://www.geze.ua)

**United Arab Emirates/GCC**  
GEZE Middle East  
E-Mail: [gezeme@geze.com](mailto:gezeme@geze.com)  
[www.geze.ae](http://www.geze.ae)

**United Kingdom**  
GEZE UK Ltd.  
E-Mail: [info.uk@geze.com](mailto:info.uk@geze.com)  
[www.geze.com](http://www.geze.com)

**GEZE GmbH**  
Reinhold-Vöster-Straße 21–29  
71229 Leonberg  
Germany  
Tel.: 0049 7152 203 0  
Fax: 0049 7152 203 310  
[www.geze.com](http://www.geze.com)

