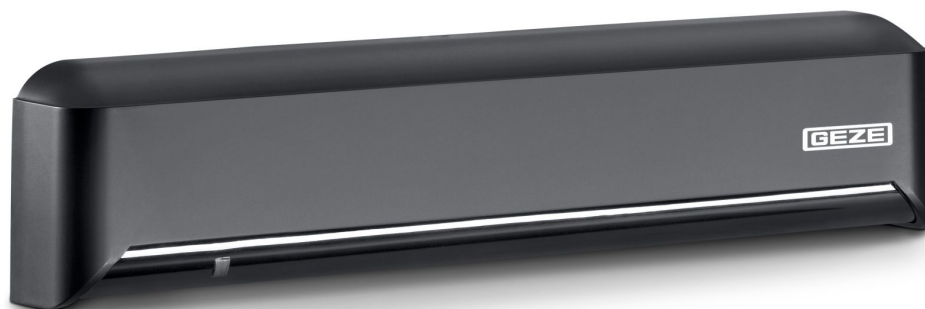


# Product data sheet

## GC 365

Combined detector for activating and protecting automatic sliding doors with four different infrared light curtain configuration settings



### Product features

- Radars movement detector with infrared light curtain and third presence detector
- Reliable detection up to an installation height of 3500 mm.
- Four adjustable light curtain configurations without additional light prisms
- Fewer total sensors are required due to the large detection area on the floor
- Look back function secures the area between the door leaves during the hold-open time
- Installation and parameter setting information provided directly in the sensor housing
- All settings can be conveniently made by DIP switch

### Application Areas

- Activation and protection of automatic sliding doors
- Interior and exterior doors

### Product Data Table

Product features	GEZE GC 365
Technology	Electromagnetic radar waves/active infrared beams
Operating voltage	12-30 V DC / 12-24 V AC
Operating current	approx. 100 mA
Output	Radars GC 365 R: relay (potential-free contact), 50 V DC max. switching voltage, 300 mA max. output current, Radars GC 365 SF: transistor (opto-coupler, potential-free), 50 V DC max. switching voltage, 300 mA max. output current, Light curtain: electric relay, 50 V DC max. switching voltage, 100 mA max. output current
Height	61 mm
Width	267 mm
Depth	38 mm
Installation height (min.)	2000 mm
Installation height (max.)	3500 mm
Connection cable	3000 mm
Weight	270 g
IP rating	IP54
Operating temperature	-20 °C 55 °C
Humidity	0-80 % relative, non-condensing
Approvals	DIN 18650, EN 16005