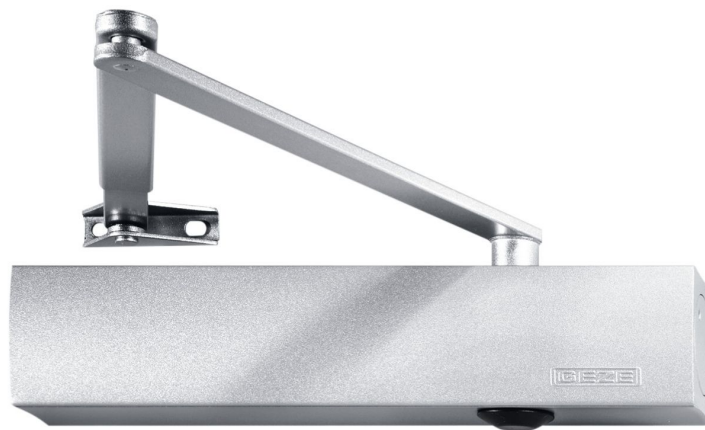


# Product data sheet

## TS 4000 EN 1-6

Overhead door closer with link arm for single leaf doors with a leaf width of up to 1400 mm



### Product features

- Closing force with variable adjustment from EN1-6
- Can be used for right and left hand doors without conversion
- Mechanical latching action which accelerates the door shortly before the closed position
- Closing speed can be individually adjusted
- Integrated back check, slows down doors that are thrown open forcefully
- Visual closing force display for easy control of the setting
- All functions can be set from the front (except for latching action)

### Application Areas

- Right and left single-action doors
- Single-action doors up to 1400 mm leaf width
- Door leaf installation hinge side and transom installation opposite hinge side
- Door leaf installation on the opposite hinge side possible in parallel arm installation

### Product Data Table

Product features	GEZE TS 4000
Suitability for fire protection doors	Yes

### Accessory

#### Product name

- F-ARM N. AUSSCHALT
- Gestänge TS 2/4000 mit ein-/ausschaltbarer mech. Festst.
- ABDECKK TS 5500/4500

### Part

#### Product name

- Gestänge TS 2/4000 Standard
- GEST. TS 4000 VERL.
- TS 4000 O. GESTAENGE