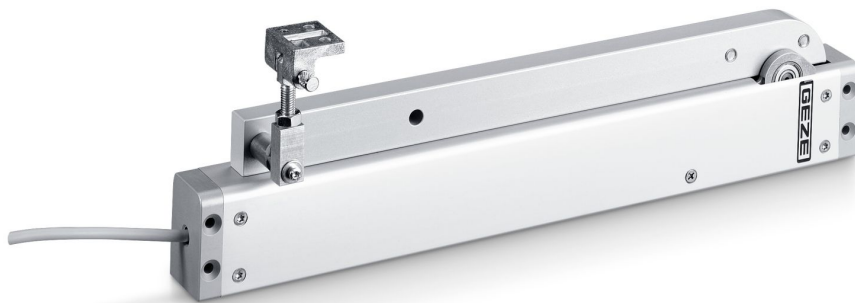


Product data sheet

RWA K 600 F

Retractable arm drive for installation at windows



Product features

90° window opening in less than 60 seconds
Powerful drive with high torque
Connection cable simple to replace by means of plug
Integrated status contact for door opener control or feedback
Integrated synchro module which can operate max. two drives without external control unit
Tested in natural smoke and heat extraction devices in accordance with EN 12101-2

Application Areas

RWA and natural ventilation (24 V)
Inward-opening windows with bottom-hung, top-hung and side-hung leaves
Installation on wooden, plastic or metal windows
Frame installation

Product Data Table

Productname	RWA K 600 F
Depth	40 mm
Current consumption	1.4 A
Length of power supply cable	5 m
Cable dimensions	0.5 mm ²
Temperature range	-5 °C 75 °C
End position cut-off extended	Internal path sensor
End position cut-off retracted	Internal path sensor
Overload cut-off	Yes

Accessory

Product name

GEZE safety scissor no. 35
GEZE safety scissor no. 60