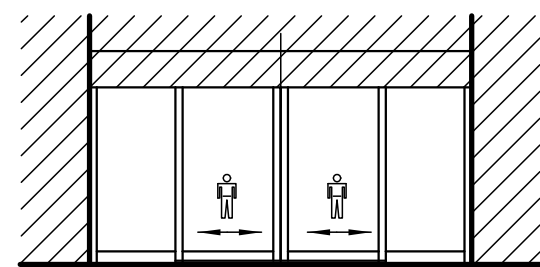
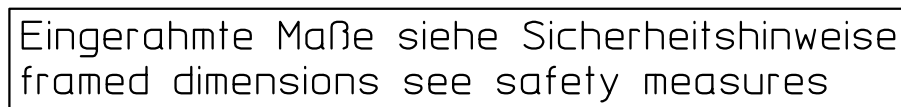


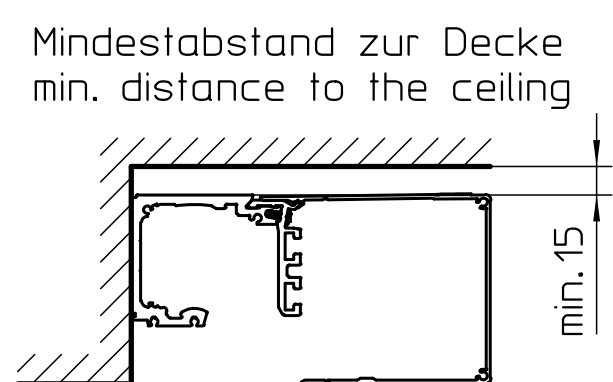
V: Fixation at wall, angular floor guide,
wooden leaf with glass infill w/o safety light barrier profile



A schematic diagram of a two-person lift car. The car is shown in cross-section with two figures inside. Above the car, two dimension lines are labeled: 'BIs' for the width of the car and 'LB' for the length of the car.

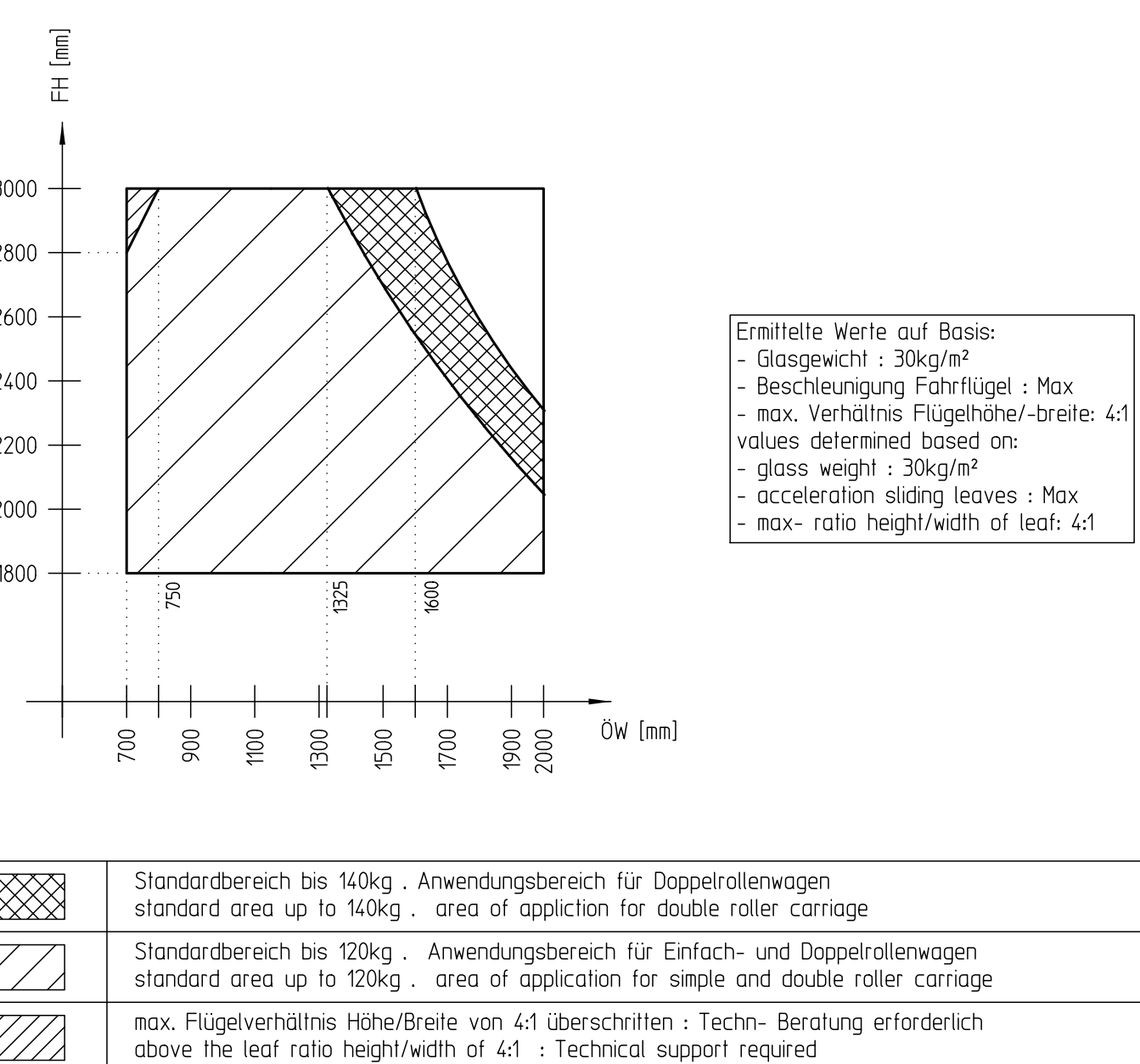
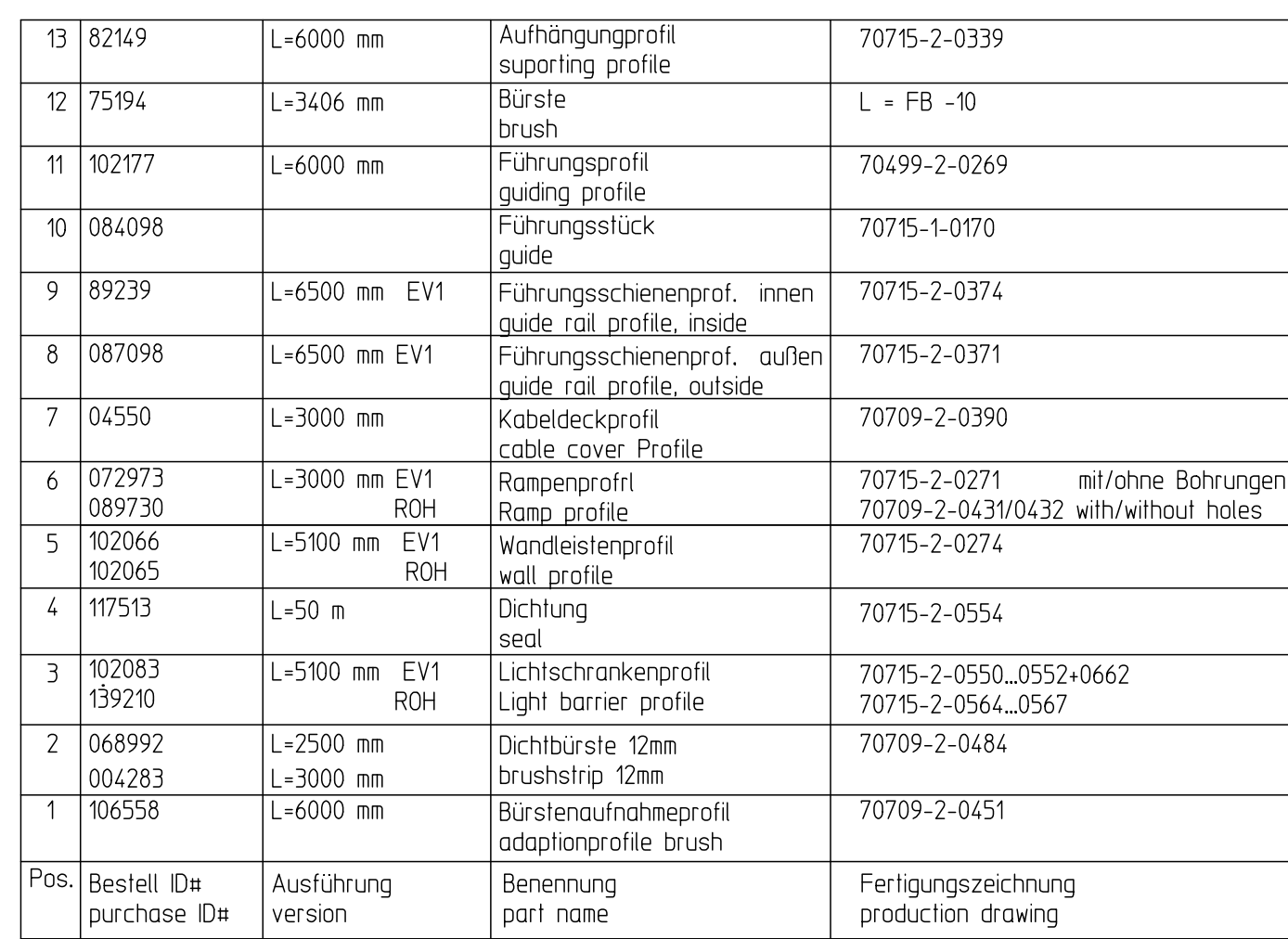


beflaggte Maßangabe:
wenn $D > 40$; $AL_{\text{eff.}} = AL_{\text{min}} + (D - 40) \cdot V_{\text{rs}} + V_{\text{ls}}$
flagged dimensions:
when $D > 40$; $AL_{\text{eff.}} = AL_{\text{min}} + (D - 40) \cdot V_{\text{rs}} + V_{\text{ls}}$

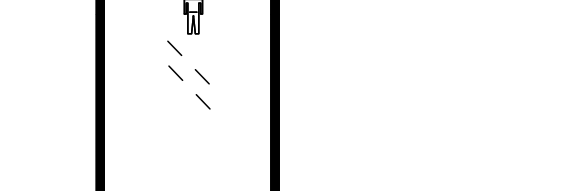
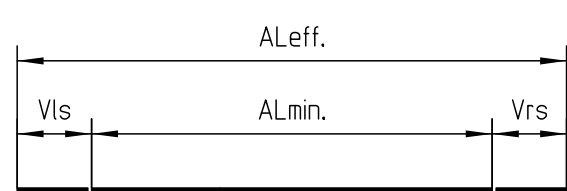


75x50x3	
ohne Lichtschranken without light barriers	70715-2-0416
mit Lichtschranken rechts with light barriers right	70715-2-0533
mit Lichtschranken links with light barriers left	70715-2-0534
90x40x3	
ohne Lichtschranken without light barriers	70715-2-0309
mit Lichtschranken rechts with light barriers right	70715-2-0535
mit Lichtschranken links with light barriers left	70715-2-0536
120x60x3	
ohne Lichtschranken without light barriers	70715-2-0352
mit Lichtschranken rechts with light barriers right	70715-2-0537
mit Lichtschranken links with light barriers left	70715-2-0538

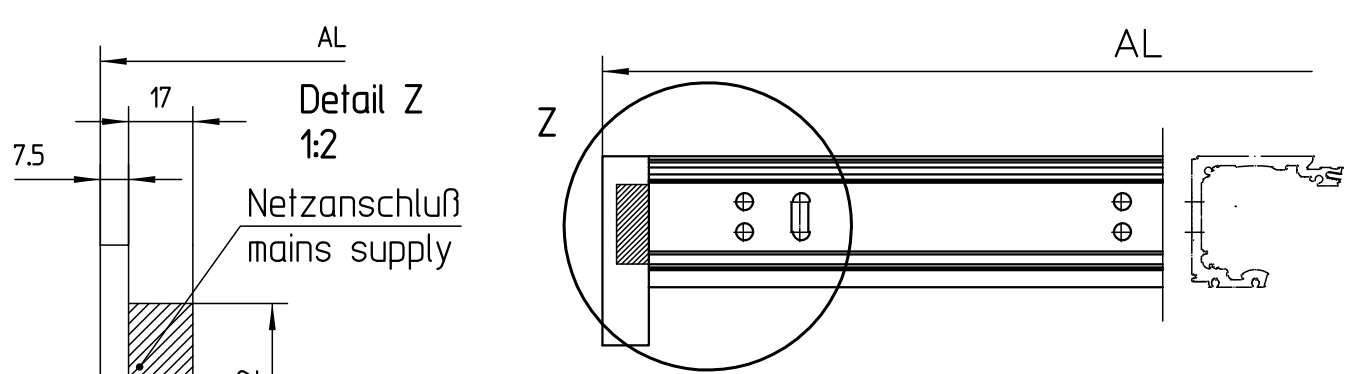
Mindestabstand zur Decke
min. distance to the ceiling



The diagram shows a horizontal line representing the effective length of a column, labeled AL_{eff} . Below this line, two points are marked: V_{ls} on the left and V_{rs} on the right. The distance between these two points is labeled $A1, min$.



clear construction width		
gross dimensions	Bauseits - by others.	"-----"
length of continuous floor guide	$L_{\text{GF}} = AL_{\text{eff}}$	"-----"
drive extension on left side		"-----"
drive extension on right side		"-----"
effective drive length incl. extensions	$AL_{\text{eff}} = AL_{\text{eff}} + V_{\text{lr}} + V_{\text{rs}}$	"-----"
minimum drive length EC T2 all types of construction	siehe aktuelle Antriebszeichnung / see current drive drawing 70518-0-001	"-----"
guide panel height	Bauseits, by others.	"-----"
guide panel width	$STB = LB - (V_{\text{rs}} + 0W + 2 \cdot 5)$	"-----"
guide panel height	$FB + DH$	"-----"
guide panel width	$FB + 0W + D$	"-----"
guide panel thickness		"-----"
clear passage height		"-----"
clear opening width		"-----"

[illegible][illegible][illegible]

				Holzflügel Beschlag 1-flg. wooden leaf fitting 1-leaf	
		Datum/date	Name	Blatt / van sheet / of	Material-Nr. D-no.
		21.11.19	u635	1/1	
		erstellt / drawn			

02	21.11.19	u335	2736	Frg. Prod./Rel. Prod	06.05.20	ibat	Handmaß / scale	1:2	Zeichnungs-Nr. / document-no. 70518-en39
01	24.04.19	u304	*	Frg. Prod./Rel. Prod					
00	26.04.18	u313	*						

CPE	Journal December	Date	Name none	Penn State - N. Doc. change no.				70316 cps?
-----	---------------------	------	--------------	------------------------------------	--	--	--	------------

[illegible]